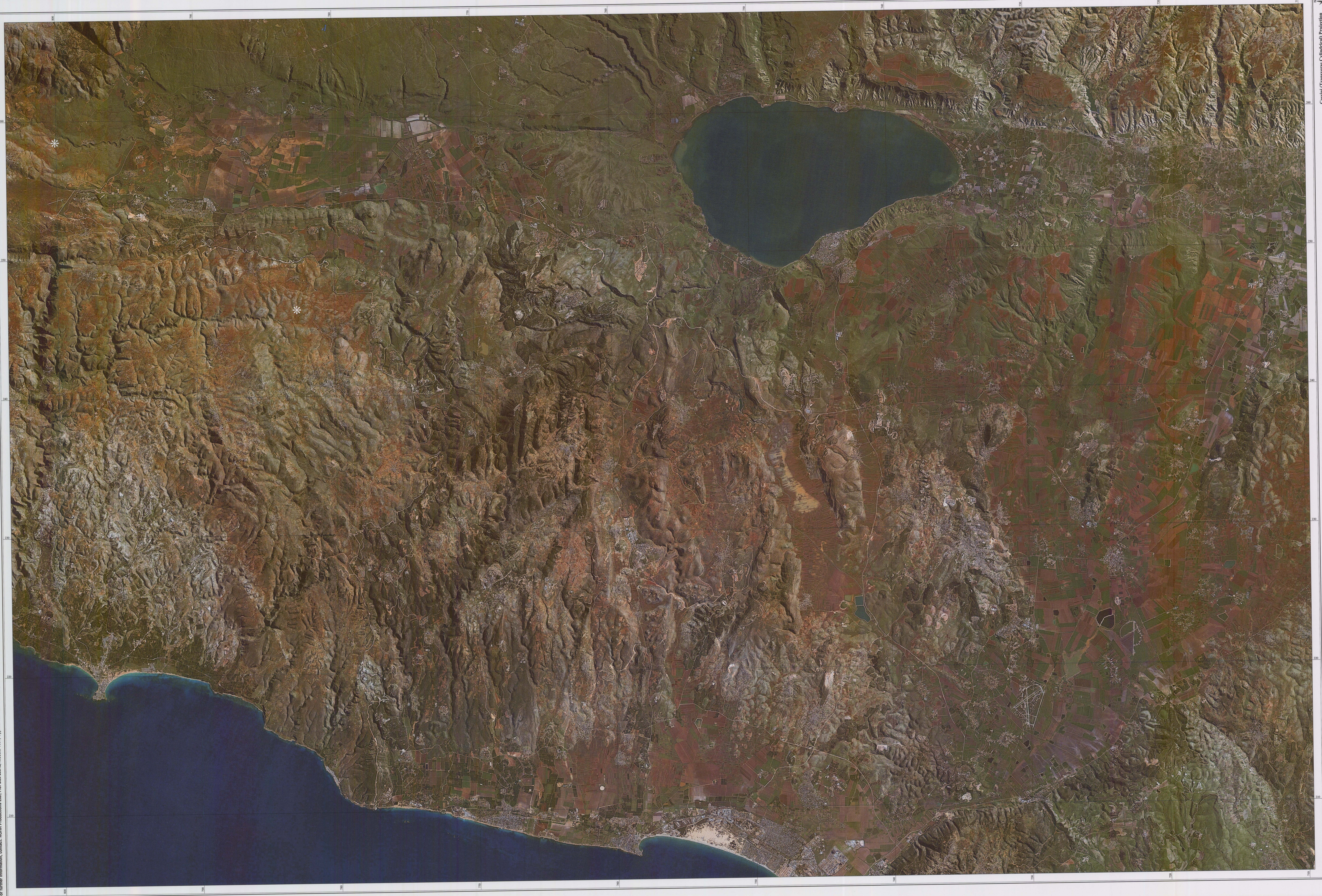


THE HOLY LAND SATELLITE DATABASE PROJECT: This 10 m pixel imagery was made available by the ESA, with the NASA LANDSAT E satellite with the French SPOT satellite. The project was funded by the British Council and the British Government. The project includes the Holy Land Satellite Atlas (Volume 1), Terrain Recognition and Volume 2: The Regions and corresponding sets of Overhead Projection Transparencies, also the Animation CD-ROM, which allows interactive, real-time, 3-D animation of the data. For further information, contact: ROHR Productions Ltd., P.O. Box 23117, Cyprus. Tel: 357 2 973667, Fax: 357 2 973667, E-mail: info@rohrproductions.com

Satellite Imagery © 2000 ROHR Productions Ltd. and C.N.E.S.



Published March 2000 by Dr. John K. Hill, Geological Survey of Israel
GSI Report GS04/2000

NAZARETH

Caushi Transverse Collimated Project
Scale 1:100,000, North East Grid Supersystem